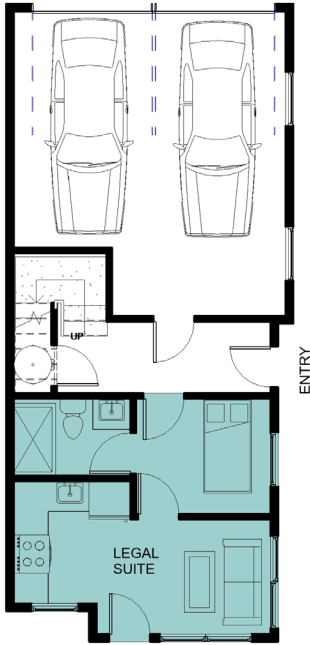




NORTH GATE  
RESIDENCES

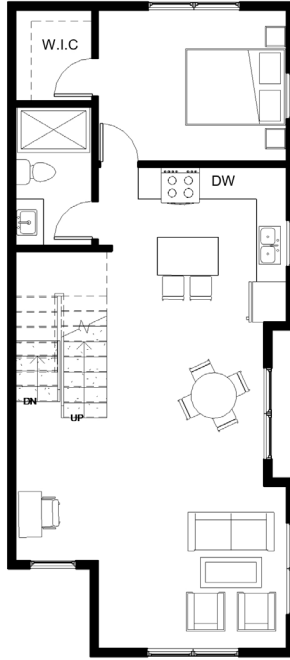
# UNIT 12

## 3 BEDROOM + LEGAL RENTAL SUITE



SUITE  
ENTRY

LOWER FLOOR



MAIN FLOOR



UPPER FLOOR

- 3
- 4
- 2
- 1776
- 3

LAYOUTS ARE FOR ILLUSTRATION PURPOSES AND MAY REFLECT THE MIRROR IMAGE OF THE ACTUAL FLOOR PLAN. THE DEVELOPER RESERVES THE RIGHT IN ITS DISCRETION TO MAKE CHANGES TO THE FLOOR PLANS, PROJECT DESIGNS, FEATURES AND DIMENSIONS. SQUARE FOOTAGES ARE APPROXIMATE AND HAVE BEEN CALCULATED FROM PRELIMINARY STRATA PLAN DRAWINGS. BUYER TO VERIFY. ACTUAL FINAL DIMENSIONS FOLLOWING COMPLETION OF CONSTRUCTION MAY VARY FROM THOSE SET OUT HEREIN.

### SQUARE FOOTAGE

Lower Floor	375 ft <sup>2</sup>
Main Floor	762 ft <sup>2</sup>
Upper Floor	639 ft <sup>2</sup>
<b>Total</b>	<b>1776 ft<sup>2</sup></b>
Garage	371 ft <sup>2</sup>

